

# EGCP-3 MC

## Multi-unit Mains Controller Generator System Control Package

### DESCRIPTION

The EGCP-3 MC is a powerful microprocessor-based system control and management package designed for the most demanding power generation applications.

The EGCP-3 MC combines power system, switchgear, bus and utility monitoring, protection, and control functions in a single, compact, and cost-effective package.

Perfect for medium and large-sized generating systems, the EGCP-3 MC is designed for use in ATS, peaking, or utility paralleled systems.

The MC is a supervisory control system that works with EGCP-3 LS units to provide total system control, including multiple utility tie applications.



### APPLICATIONS

#### Real kW Load Control

- True RMS power calculations
- Configurable load/unload ramp rates
- Load control of up to 15 EGCP-3 LS units using percentage based load sharing
- Utility Import/Export KW control
- Process control
- Externally adjustable load or process references (using Analog Inputs or Modbus)
- Zero power transfer across breaker during closed transition
- Emergency Power Supply (EPS) supplying load alarm and discrete output
- LOM alarms and discrete output
- Load shed on overload

#### Reactive kVAR Control

- Configurable load/unload ramp rates
- PF or VAR control using percentage based load sharing
- Utility Import/Export VAR or PF control
- Externally adjustable VAR or PF references (using Analog Inputs or Modbus)
- Manual voltage control capability
- Automatic start/stop based on time of day or demand level
- Four time-of-day programs with two starts and durations per program
- Parallel to utility or perform open/closed transition for time-of-day starts
- Configurable time delayed start/stop and immediate start for demand levels
- Configurable time delay
- Automatic demand monitoring of multiple mains inputs

#### Automatic Transfer Switch (ATS)

- Open or Closed transition
- Configurable fast transfer time, LOM action delay, utility and bus stable delay

- Complete system control package
- Automatic load-demand sequencing of multiple units
- Synchronization of two breakers/contactors
- Comprehensive system protection—bus and utility
- Revenue-grade power and energy metering
- Digital display of bus, utility, and system data
- Real kW and reactive kVAR control
- Advanced network communications with Echelon<sup>®</sup> and Modbus<sup>®</sup> networks
- Built-in system diagnostics

## Synchronizing

- Phase match or slip frequency synchronization with voltage matching
- Full three-phase sensing on both buses
- Adjustable phase window, voltage window, re-close attempts, re-close timing
- Dead bus closing logic internal to the control
- Synch check (25)
- Breakers or contactors

## Communications

- Modbus® \* RTU via RS-232/-422/-485 serial ports
- ServLink, Watch Window via RS-232/-422/-485 serial ports
- Echelon® \*\* TP/XF-1250 network (LON)

## Diagnostic Features

- Breaker/Contactor synchronization timeout and re-close alarms
- Breaker/Contactor feedback and shunt trip alarms
- Phase Rotation Mismatch
- Network communication error alarms
- Analog input out-of-range alarms
- Configuration check

## Bus Protective Features

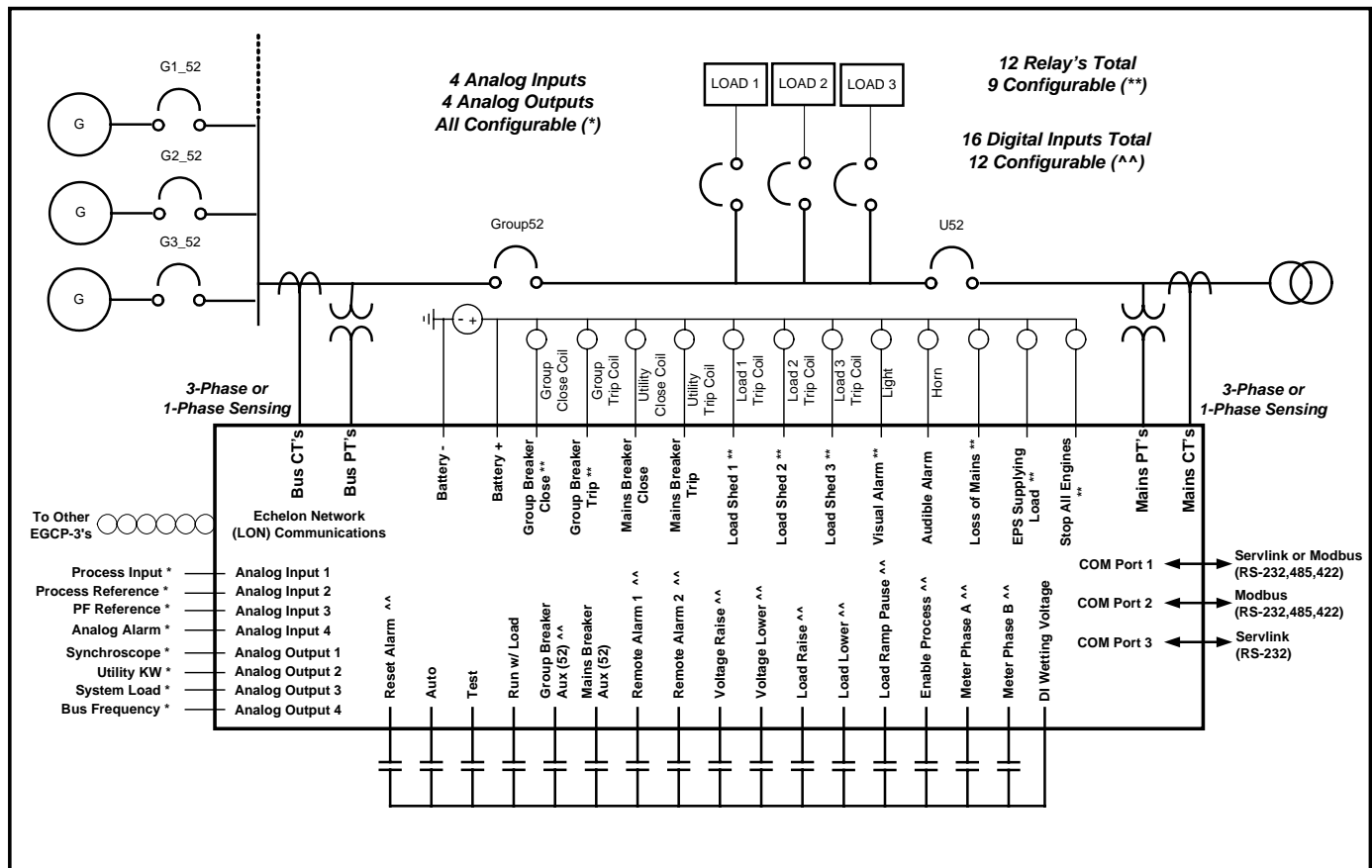
- Over/Under Voltage (59, 27)
- Over/Under Frequency (81O, 81U)
- Directional (Forward/Reverse) Power (32) \*
- Negative Sequence Phase Overcurrent (46)
- Negative Sequence Phase Overvoltage (47)
- Phase Overcurrent (51) \*
- Voltage Restrained Phase Overcurrent (51V) \*
- Directional VAR
- Phase Current Imbalance (46) \*

## Utility Protective Features

- Over/Under Voltage (59, 27)
- Over/Under Frequency (81O, 81U)
- Directional (Import/Export) Power (32) \*
- Negative Sequence Phase Overcurrent (46)
- Negative Sequence Phase Overvoltage (47)
- Phase Overcurrent (51) \*
- Voltage Restrained Phase Overcurrent (51V) \*
- Directional VAR
- Phase Current Imbalance (46) \*
- Loss of Mains/Loss of Mains with Alarm
- Load Surge (islanding protection)

\*—Inverse Time Protections implemented are according to IEEE C37.112 "Very Inverse" curves

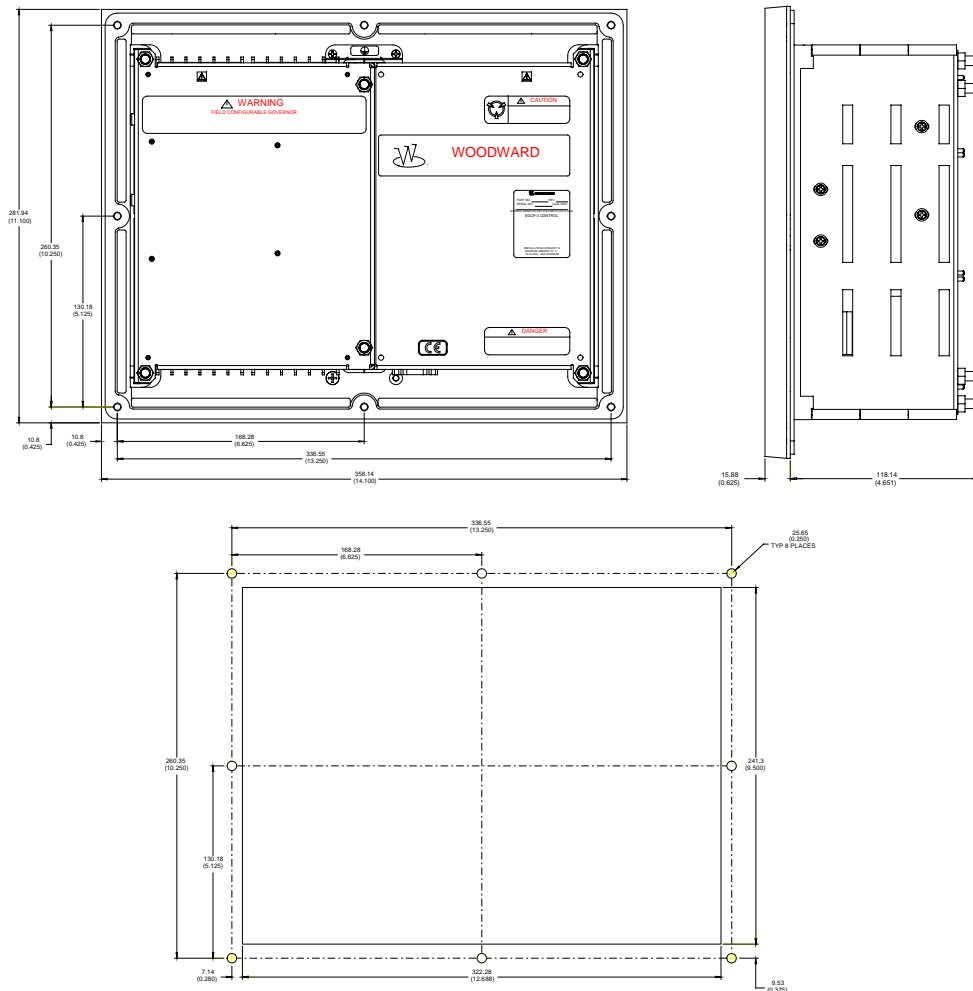
—Modbus® is a trademark of Modicon, Inc.  
 \*\*—Echelon® is a trademark of Echelon Corporation



EGCP-3 MC Interactions

# HARDWARE SPECIFICATIONS

Size:	282 mm (11.1") high x 358 mm (14.1") wide x 134 mm (5.275") deep
Operator Interface Panel:	8 (20 character) lines plus membrane keypad
Power Supply Voltage:	24 Vdc system (18–32 Vdc nominal; 9–40 Vdc maximum)
Control Part Numbers:	MC: 8406-114 Installation Manual: 26122 Operation Manual: 26195
Connectors:	Terminal blocks are screwless CageClamp-style blocks. PT and CT inputs are fixed screw terminals.
Voltage Measuring Input Range:	70–300 Vac
Current Measuring Inputs:	5 Aac RMS nominal, 7 Aac RMS maximum
Temperature Range:	–20 to +70 °C (–4 to +158 °F) operating –30 to +80 °C (–22 to +176 °F) storage
Humidity:	95% at 60 °C non-condensing
Enclosure Rating:	Type 4 (NEMA) requirements from the front panel and properly installed in an equivalent enclosure
Vibration:	Suitable for engine skid or control cabinet Random Test: 10–2000 Hz at 0.04 G <sup>2</sup> /Hz and 8.2 Grms PSD
Mechanical Shock:	30 G peak, 11 ms duration, non-operating
Regulatory Compliance:	Class I, Division 2, Groups A, B, C, D for North America Zone 2, Group IIC for Europe Declared to the EMC; Low-Voltage, and ATEX Directives Type Approval by ABS, DNV, and LR for marine applications



**EGCP-3 Outline Drawing and Panel Layout Template**  
(Do not use for construction)

PO Box 1519  
 Fort Collins CO, USA  
 80522-1519  
 1000 East Drake Road  
 Fort Collins CO 80525  
 Ph: +1 (970) 482-5811  
 Fax: +1 (970) 498-3058

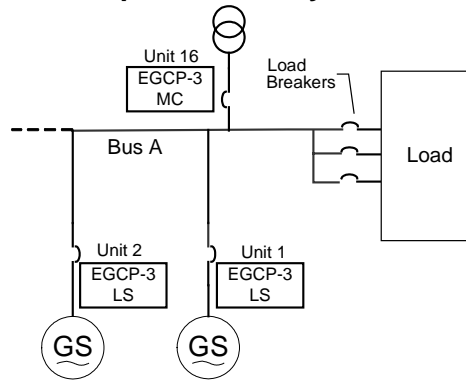
**Distributors & Service**  
 Woodward has an international network of distributors and service facilities. For your nearest representative, call the Fort Collins plant or see the Worldwide Directory on our website.

**Corporate Headquarters**  
 Rockford IL, USA  
 Ph: +1 (815) 877-7441

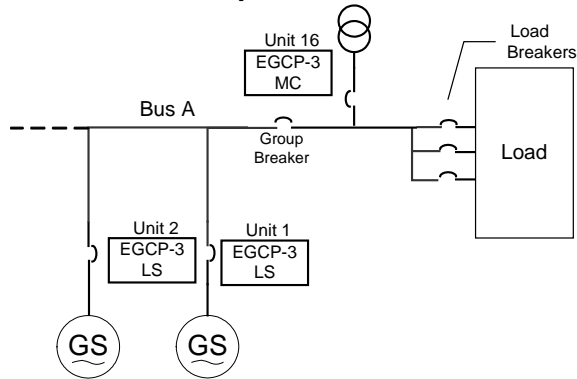
[www.woodward.com](http://www.woodward.com)

## EGCP-3 MC Applications/Configurations

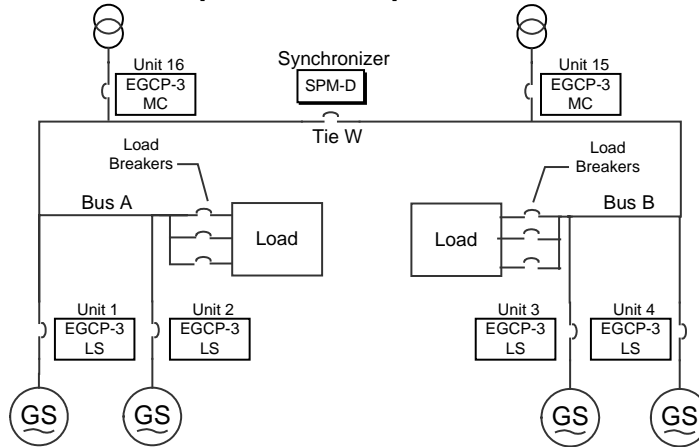
### Multiple Unit-Utility Parallel



### Multiple Unit-ATS



### Multiple Unit-Multiple Unit Parallel



### Other Configurations

- Single Utility-Multiple Bus
- Multiple Utility-Single/Multiple Bus

For a complete set of EGCP-3 Installation/Operation manuals or Application Notes on the above configurations, download from the Woodward Industrial Controls website at:

[www.woodward.com/ic](http://www.woodward.com/ic)

This document is distributed for informational purposes only. It is not to be construed as creating or becoming part of any Woodward Governor Company contractual or warranty obligation unless expressly stated in a written sales contract.

© Woodward 2002  
 All Rights Reserved

06/3/F

For more information contact: